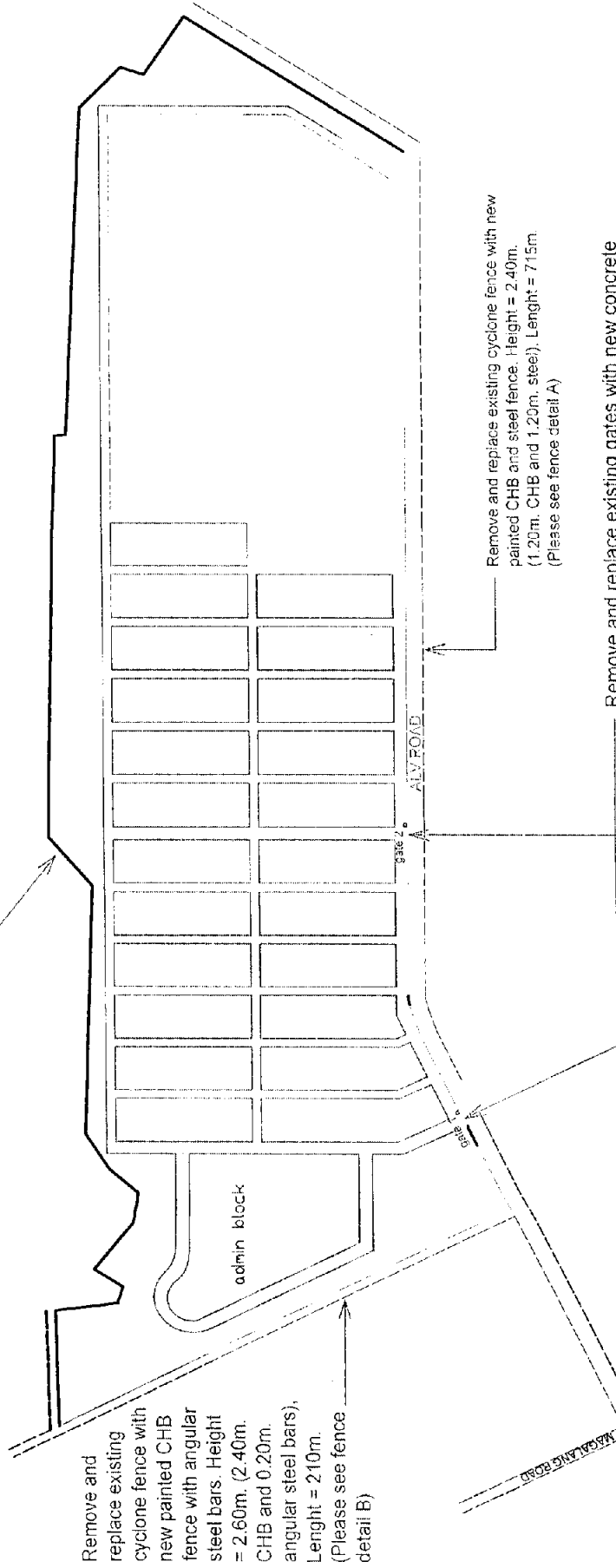


Existing CHB fence with barbed wire to be repaired and painted. Varying height and length is approximately 1,000m.



Remove and replace existing cyclone fence with new painted CHB fence with angular steel bars. Height = 2.60m. (2.40m. CHB and 0.20m. angular steel bars), Length = 210m. (Please see fence detail B)

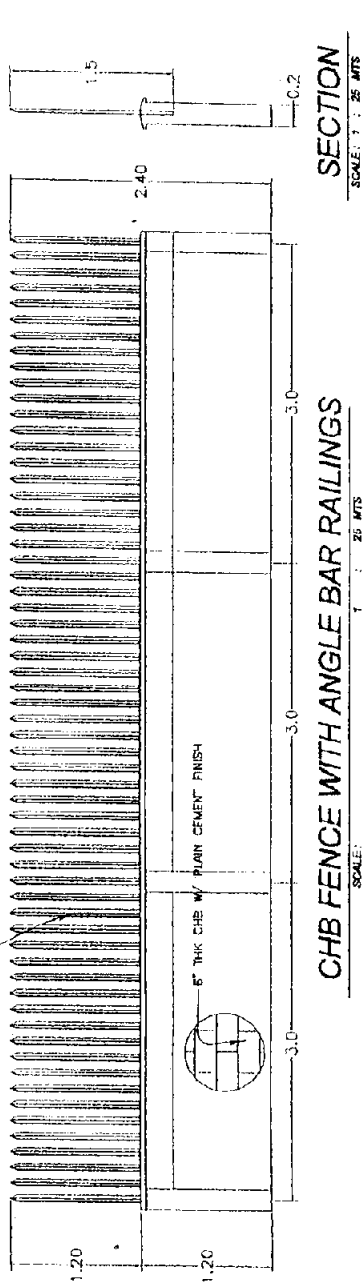
Remove and replace existing cyclone fence with new painted CHB and steel fence. Height = 2.40m. (1.20m. CHB and 1.20m. steel). Length = 715m. (Please see fence detail A)

Remove and replace existing gates with new concrete gates/guard houses. (Please see gate/guard house details)

**NOTE:**  
 1. all dimensions and alignment are subject to verifications and the accepted.  
 2. all indicated fence height are minimum fence height measured from natural grade line (NGL) and fence length are indicative length only subject to actual survey and alignment.  
 3. all other works necessary to complete the perimeter fence project are deemed included.

**pampanga economic zone (PEZ)  
 perimeter fence project**

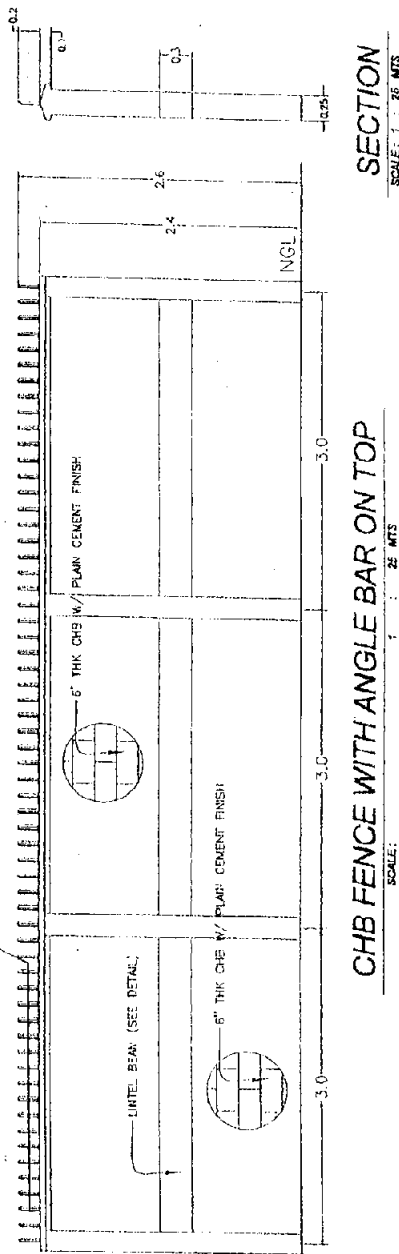
2" x 2" x 1/8" ANGLE BAR SPACED AT 0.15 M.O.C. WITH 1" x 1" x 1/8" ANGLE BAR FRAME EMBEDDED TO CONCRETE. APPLY 2 COATS PAINT ON RAILINGS



**SECTION**  
SCALE: 1 : 25 MTS

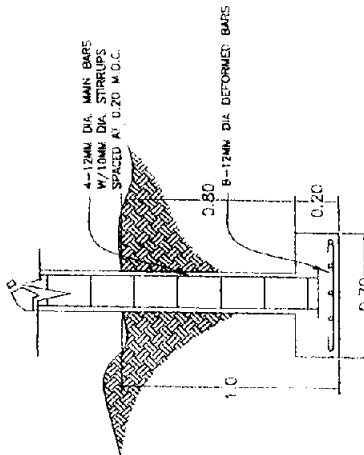
**CHB FENCE WITH ANGLE BAR RAILINGS**  
SCALE: 1 : 25 MTS

USE 1" x 1/8" ANGLE BAR RAILING SPACED @ 0.15 M.O.C. WITH 1" x 1" x 1/8" HORIZONTAL ANGLE BAR FRAME EMBEDDED TO CONCRETE. APPLY 2 COATS PAINT ON RAILINGS.



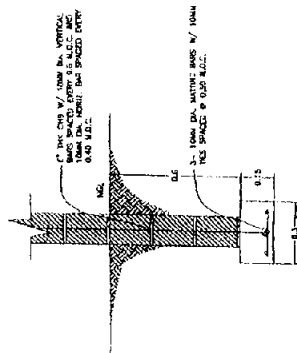
**SECTION**  
SCALE: 1 : 25 MTS

**CHB FENCE WITH ANGLE BAR ON TOP**  
SCALE: 1 : 25 MTS

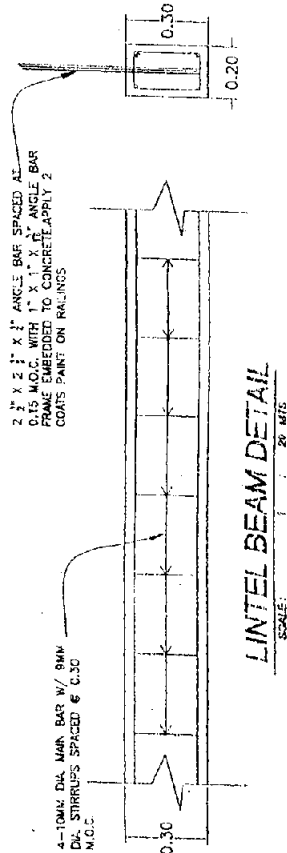


**PLAN**  
DRAWN: NTS

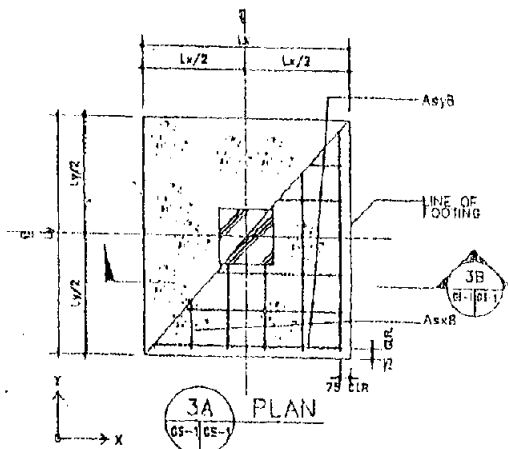
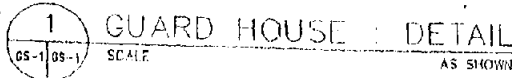
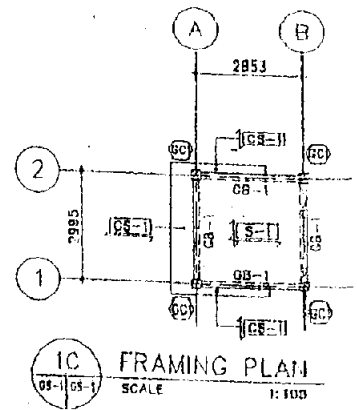
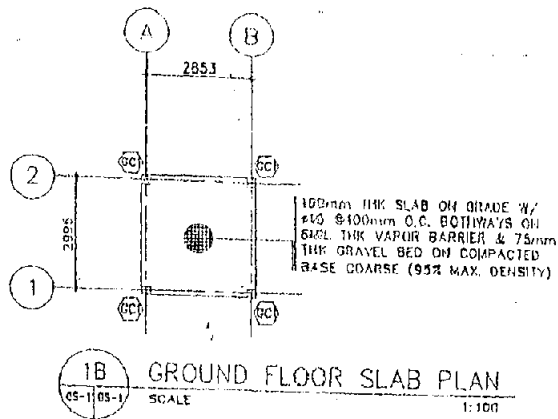
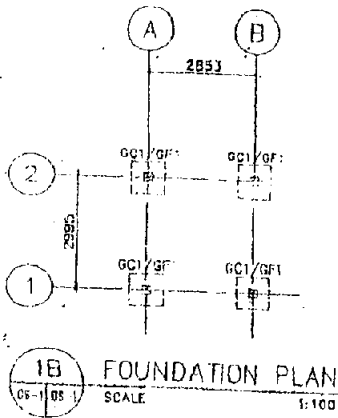
**COLUMN AND FOOTING DETAIL**  
NTS



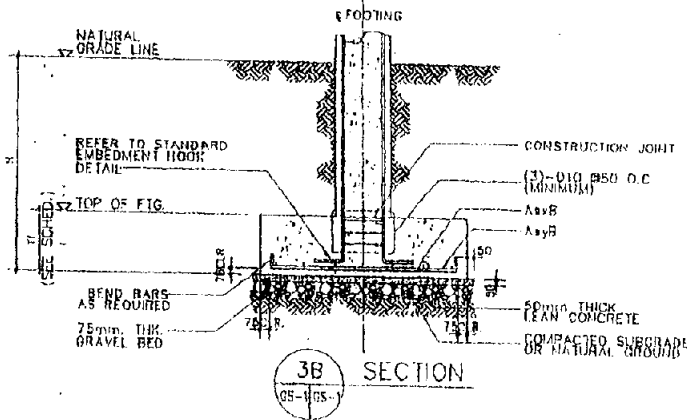
**WALL FOOTING DETAIL**  
DRAWN: NTS



**LINTEL BEAM DETAIL**  
SCALE: 1 : 25 MTS



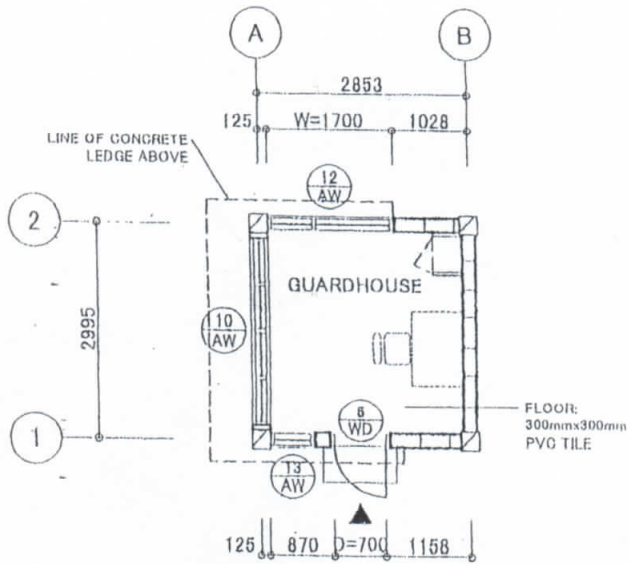
MARK	GB-1		
LOCATION	DISC. SUPPORT	MIDSPAN	CONT. SUPPORT
TOP BARS	2-#16	2-#16	
BOT BARS	2-#16	2-#16	
WEB BARS			
STIRRUPS	#10, 1 @50, 4 @100, REST @200mm @		



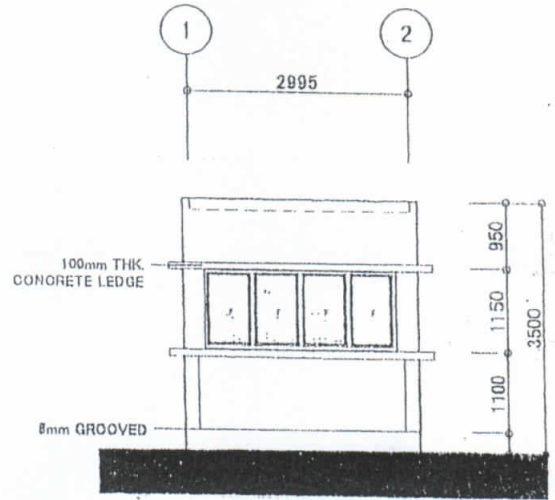
MARK	GC1	
LOCATION	DISC. SUPPORT	MIDSPAN
MAIN BAR	4-#16	
JOINT HOOPS		
COLUMN TIES	#10 @1 @50, 1 @100, REST @200mm TO U.H.	

FOOTING MARK	FOOTING DIMENSION				REINFORCING BARS			
	Lx (mm)	Ly (mm)	Tl (mm)	H (mm)	TOP BARS		BOTTOM BARS	
					A <sub>xxT</sub>	A <sub>yyT</sub>	A <sub>xxB</sub>	A <sub>yyB</sub>
GF1	900	800	250	1200			4-#16	4-#16

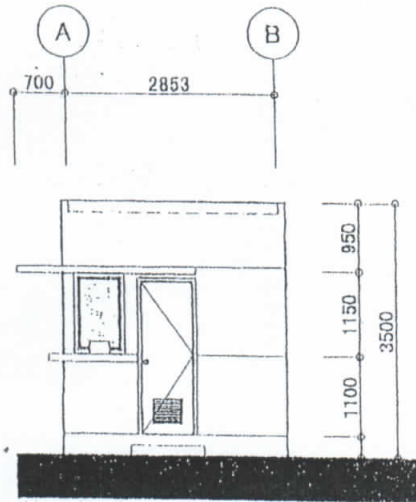
FLOOR LEVEL	SLAB MARK	SLAB THICKNESS (MM)	BAR LOCATION	SLAB REINFORCEMENT ( SPACING IN MM )								REMARKS
				SHORT SPAN				LONG SPAN				
				BAR DIA.	DISC. SUPPORT	MIDSPAN	CONT. SUPPORT	BAR DIA.	DISC. SUPPORT	MIDSPAN	CONT. SUPPORT	
	S-1	100	TOP	#10	175	-	175	#10	175	-	175	
			BOTTOM	#10	350	175	350	#10	350	175	350	TWO-WAY



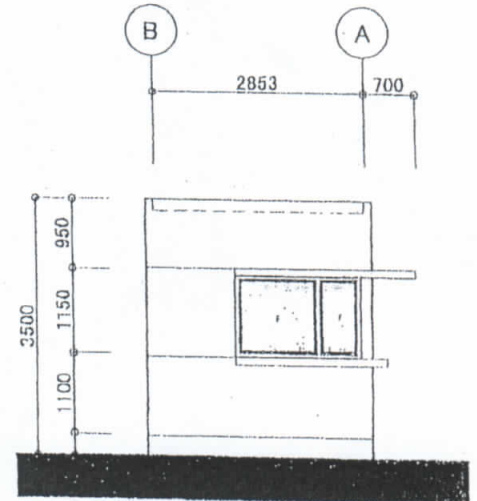
GUARDHOUSE  
DETAILED FLOOR PLAN



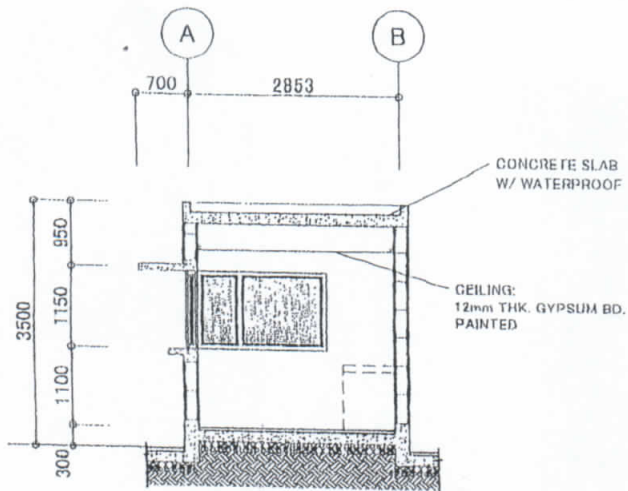
FRONT ELEVATION



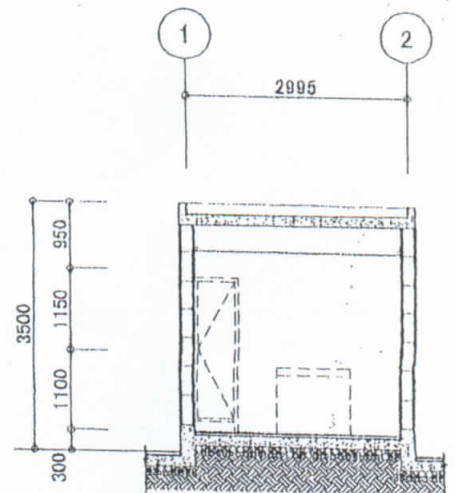
RIGHT SIDE ELEVATION



LEFT SIDE ELEVATION



SECTION - 1



SECTION - 2