

**PHILIPPINE ECONOMIC ZONE AUTHORITY
BAGUIO CITY ECONOMIC ZONE
LOAKAN ROAD, BAGUIO CITY**

BIDS AND AWARDS COMMITTEE (BAC)

BID BULLETIN NO. 01
07 November 2018

**Project Title: "SUPPLY, DELIVERY AND INSTALLATION F
MODULAR OFFICE SYSTEM FOR 2ND FLOOR, ENGINEERING AND
MAINTENANCE DIVISION, AND OZA"**

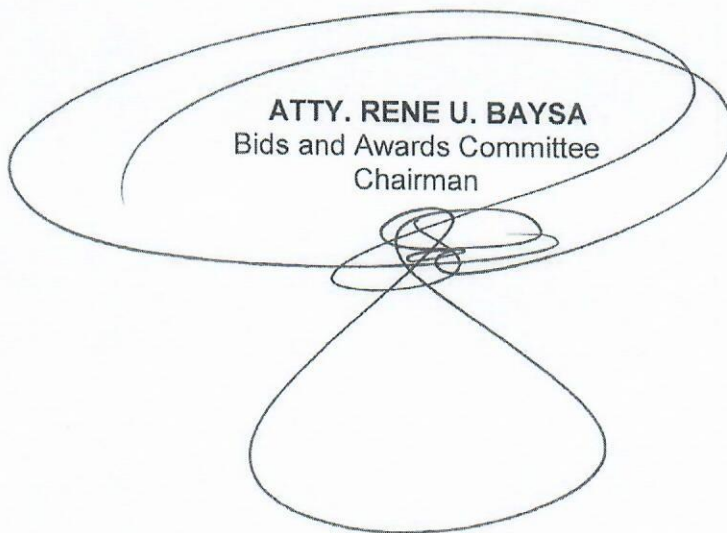
(BC-2018-10-18)

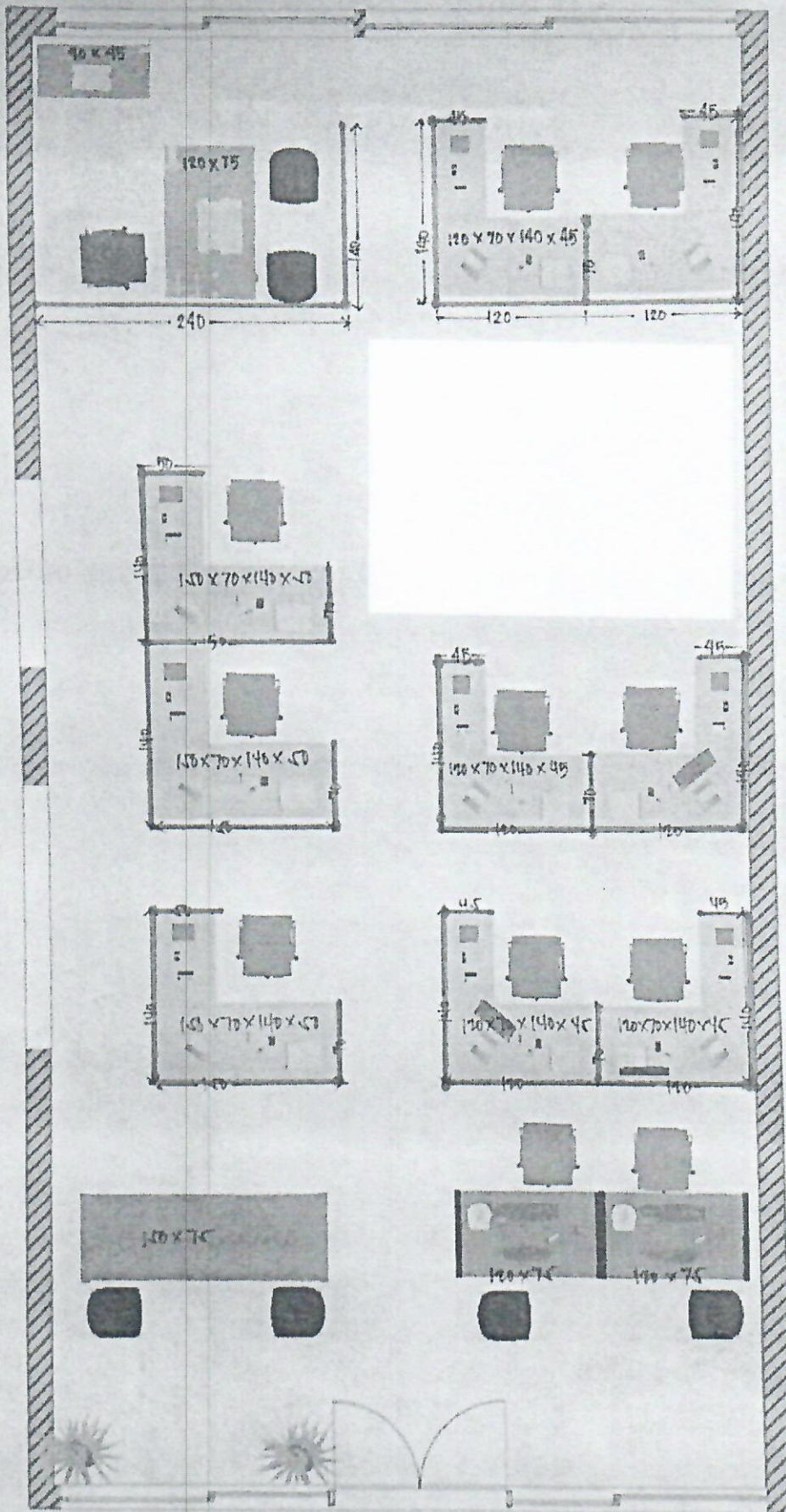
This Bulletin is issued to modify or amend the Bidding Document. This shall form an integral part in the General Terms and Conditions of the Bid Data Sheet.

FROM	TO
<p>Section VI. Schedule of Requirements (pp-70-71)</p> <p>ADMIN OFFICE</p> <ul style="list-style-type: none"> - Mobile Pedestal 430 x 510 x 680 - Drawer built-in ; 2-3 layer steel, centralized lock <p>ENGINEERING OFFICE</p> <ul style="list-style-type: none"> - Mobile Pedestal 430 x 510 x 680 - Drawer built-in ; 2-3 layer steel, centralized lock <p>OZA</p> <ul style="list-style-type: none"> - Drawer built-in ; 2-3 layer steel, centralized lock 	<ul style="list-style-type: none"> - Mobile Pedestal 430 x 510 x 680; 3- layer laminated wood - Drawer built-in ; 3-layer steel, centralized lock <ul style="list-style-type: none"> - Mobile Pedestal 430 x 510 x 680; 3- layer laminated wood - Drawer built-in ; 3-layer steel, centralized lock <ul style="list-style-type: none"> - Drawer built-in ; 3-layer steel, centralized lock
<p>Section VII. Technical Specifications</p> <p>MODULAR PARTITION (p.74)</p> <ul style="list-style-type: none"> - 2 plug outlets per work station with bottom cable channel t3-xcb 	<ul style="list-style-type: none"> - 2 face plates (1 for power and 1 for Local Area Network port)

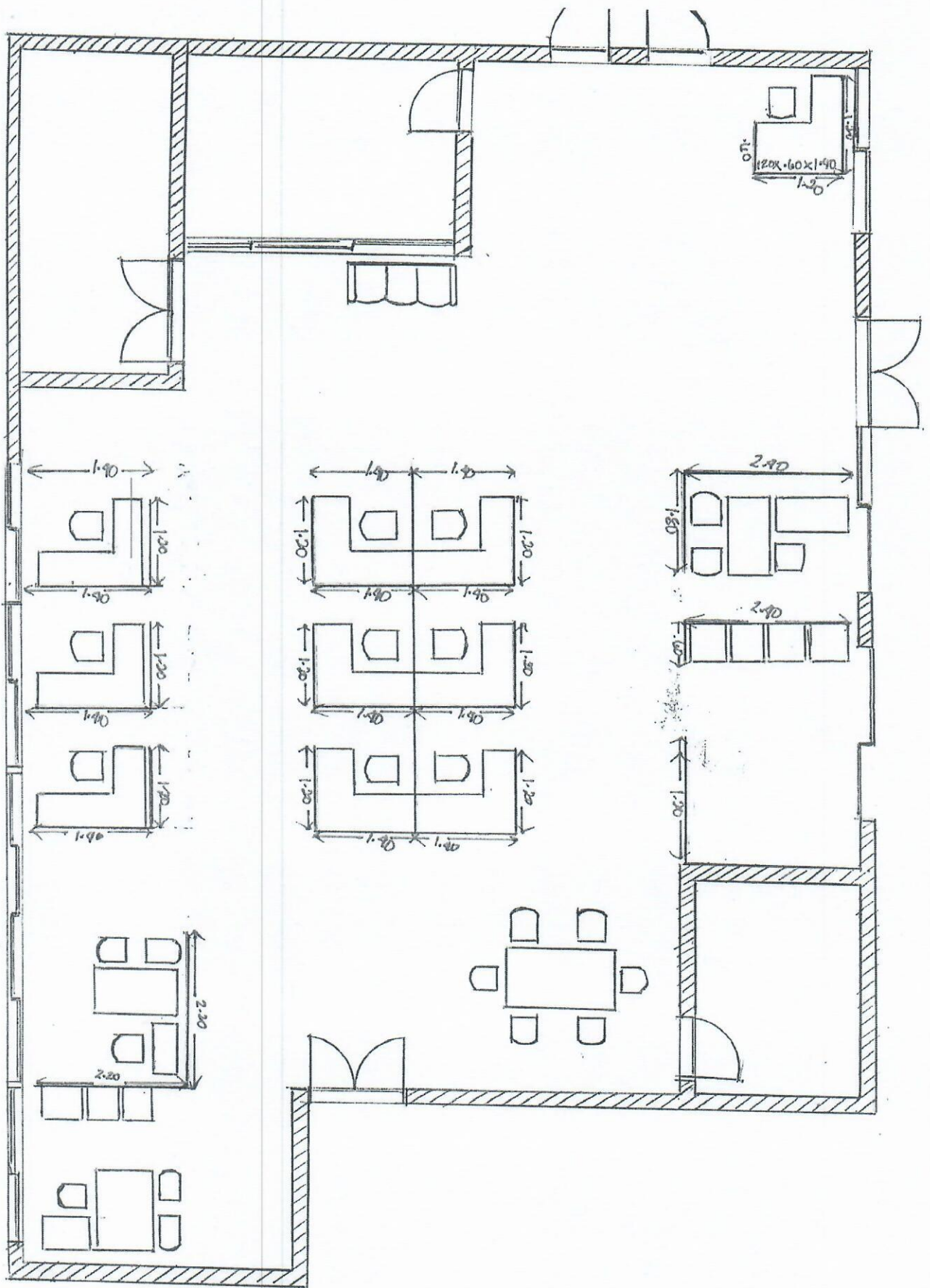
<p>MODULAR TABLES & PARTITION (for OZA; 2 work station) (P.75)</p> <ul style="list-style-type: none"> - Color code: _____; 1/8' thick clear glass top; D.Gray AC460 aluminum cappings with 45mm thick 20 guage frame; with floor adjustable glide <p>CONFERENCE TABLE</p> <ul style="list-style-type: none"> - Oblong shape for up to 10 seater capacity 	<ul style="list-style-type: none"> - 1/8' thick clear glass top; D.Gray aluminum cappings with 45mm thick 20 gauge frame; with floor adjustable glide - Oblong shape for up to 10 seater capacity (segmented)
<ul style="list-style-type: none"> • Printouts of Office System layout will be added on the annexes 	<ul style="list-style-type: none"> - See attached layout

ATTY. RENE U. BAYSA
 Bids and Awards Committee
 Chairman





ENGINEERING OFFICE
Furniture Layout



PEZA ADMIN OFFICE
Furniture Layout