



# Philippine Economic Zone Authority

## MEZ BIDS AND AWARDS COMMITTEE

Tel. No. 340-0593; Fax No. 340-0591

[www.peza.gov.ph](http://www.peza.gov.ph); [mez-bac@peza.gov.ph](mailto:mez-bac@peza.gov.ph); [mezbac@peza.gov.ph](mailto:mezbac@peza.gov.ph)

## **BID BULLETIN**

**18 July 2022**

Clarification notice is hereby given to all prospective bidders for the project, **Design and Build of Six-storey with Roof Deck MEZ Administration Office Building:**

### **1. What the preliminary conceptual design plans will consist of?**

1. Vicinity Map
2. Site Analysis
3. Site Development Plan
4. Floor Plans
5. Elevations and Sections
6. Area Tabulation
7. Conceptual Section
8. Perspectives (Interior and Exterior)

### **2: What are the minimum key personnel for the design and construction phase?**

#### **Minimum Key Personnel for Design:**

Project Architect  
Structural/Civil Engineer  
Professional Electrical Engineer  
Professional Mechanical Engineer  
Professional Electronics Engineer  
Master Plumber  
Sanitary Engineer  
Geotechnical Engineer  
Quantity and Cost Engineer/Architect

#### **Mactan Economic Zone**

ML Quezon Highway, Bo. Ibo, Lapu-Lapu City, Cebu, Philippines  
Telephones (032) 3400595 & 3401564 • Facsimile (032) 3400591  
E-mail: [mez@peza.gov.ph](mailto:mez@peza.gov.ph) • Website: [www.peza.gov.ph](http://www.peza.gov.ph)

ISO 9001:2015 Certified Organization  
with Certificate Nos. AJA 08/13114 AND AJA08-0009



## **Minimum Key Personnel for Construction:**

Project Site Manager  
Project Engineer/Architect  
Materials Site Engineer  
Electrical Site Engineer  
Mechanical Site Engineer  
Sanitary Engineer/Master Plumber  
Safety Engineer/Safety Officer  
Foreman

**3: Can we nominate key personnel for 2 positions? (example: Structural engineer for design key personnel and Project Manager for the Construction Key personnel)**

Yes, you can as long as the personnel agrees.

**4: Can we pledge major equipment supported by a Purchase Agreement and Certification of Availability from the Vendor?**

Yes, you can.

**5: Is the certification of site inspection required upon submission of bids?**

Certification of Site Inspection is not required as per NPM No. 081-2014 dated 22 October 2014.

**6: For Lump-sum bid prices, which shall include the detailed engineering cost, in the prescribed Bid form;**

**Is there an available format for this? If none can we use our own format?**

- A. You may use the Detailed Estimate format provided in the bidding documents for the **Lump-sum bid prices** (Additional requirement as per Annex G), which shall include the detailed engineering cost, in the prescribed Bid form.
- B. You may use your own format for the **Detailed estimates** (additional requirement as per Annex G), including a summary sheet indicating the unit prices of construction materials, labor rates, and equipment rental used in coming up with the bid.

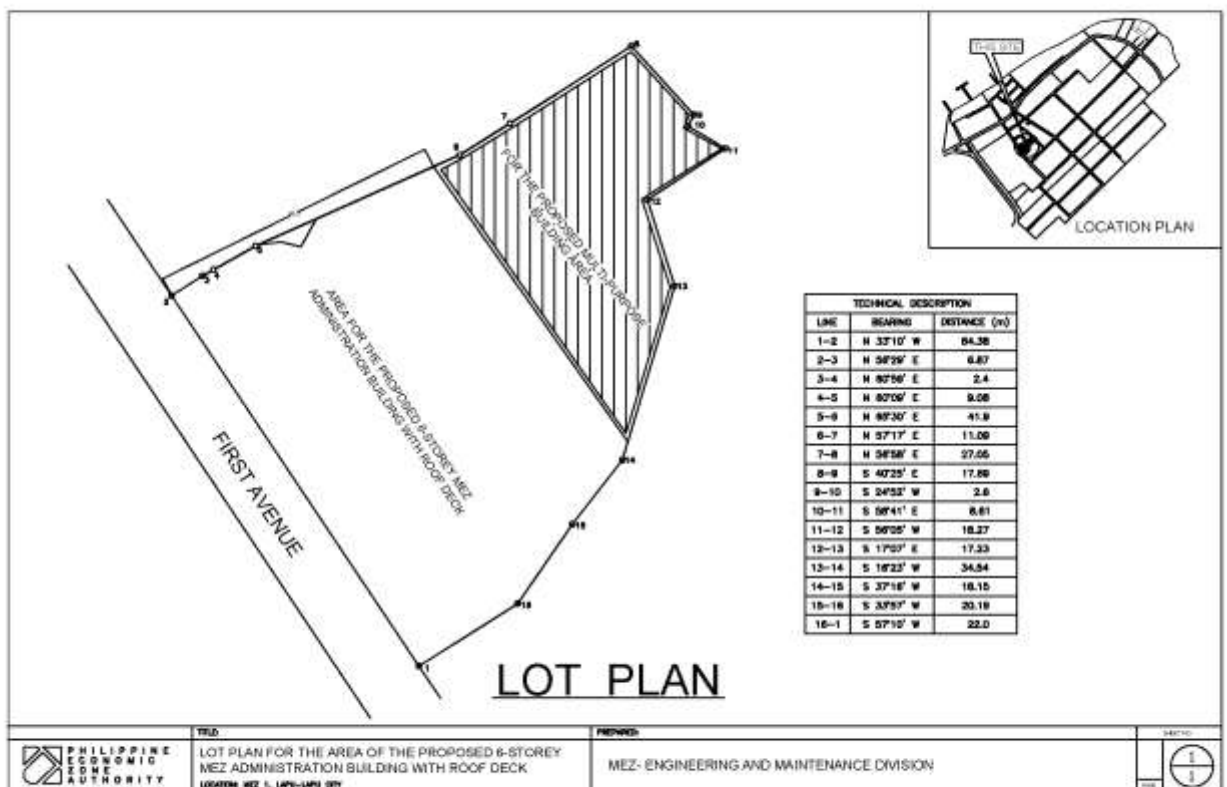


7: For Cash Flow by the quarter and payment schedule:

Is there an available format for this? If none can we use our own format?

You can use your own format.

8. Lot Plan details as attached.



This Bid Bulletin is issued this 18 July 2022, for guidance and information of all concerned.

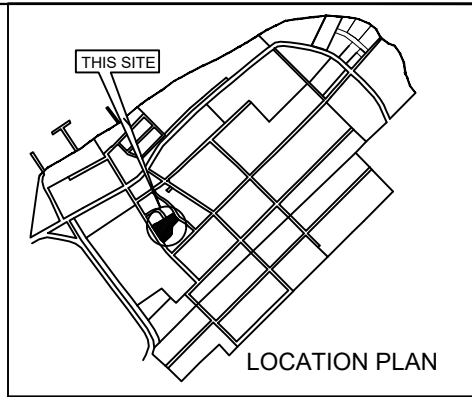
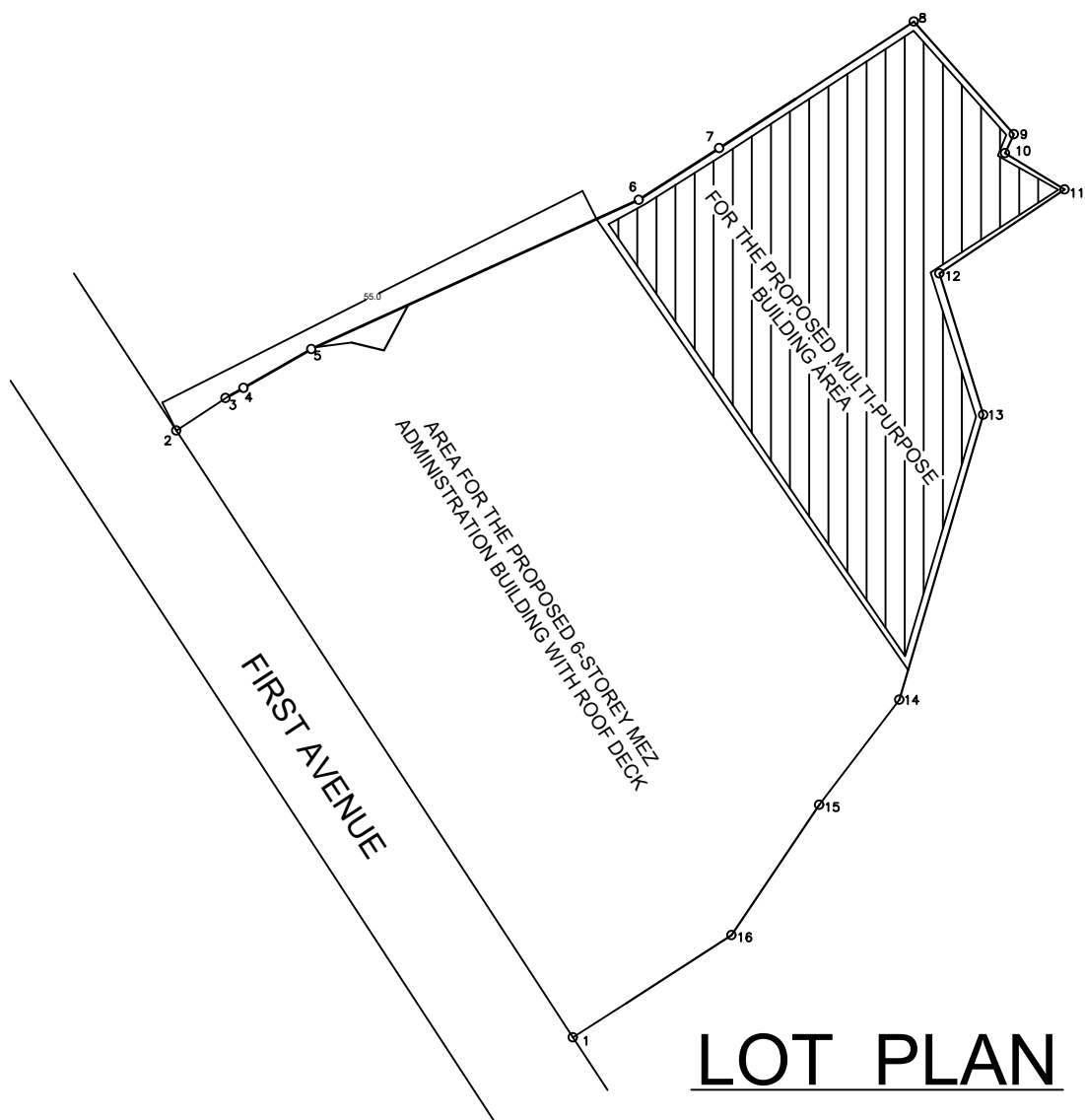
Very truly yours,

**ENGR. LOUIE EVANS E. ESOTO**  
MEZ BAC Chairperson

**Mactan Economic Zone**

ML Quezon Highway, Bo. Ibo, Lapu-Lapu City, Cebu, Philippines  
Telephones (032) 3400595 & 3401564 • Facsimile (032) 3400591  
E-mail: mez@peza.gov.ph • Website: www.peza.gov.ph

ISO 9001:2015 Certified Organization  
with Certificate Nos. AJA 08/13114 AND AJA08-0009



| TECHNICAL DESCRIPTION |            |              |
|-----------------------|------------|--------------|
| LINE                  | BEARING    | DISTANCE (m) |
| 1-2                   | N 33°10' W | 84.38        |
| 2-3                   | N 56°29' E | 6.87         |
| 3-4                   | N 60°59' E | 2.4          |
| 4-5                   | N 60°09' E | 9.08         |
| 5-6                   | N 65°30' E | 41.9         |
| 6-7                   | N 57°17' E | 11.09        |
| 7-8                   | N 56°58' E | 27.05        |
| 8-9                   | S 40°25' E | 17.69        |
| 9-10                  | S 24°52' W | 2.6          |
| 10-11                 | S 58°41' E | 8.61         |
| 11-12                 | S 56°05' W | 18.27        |
| 12-13                 | S 17°07' E | 17.23        |
| 13-14                 | S 16°23' W | 34.54        |
| 14-15                 | S 37°16' W | 18.15        |
| 15-16                 | S 33°57' W | 20.19        |
| 16-1                  | S 57°10' W | 22.0         |

# LOT PLAN