

ELECTRICAL NOTES:

ALL ELECTRICAL WORKS AND INSTALLATIONS HEREIN SHALL BE EXECUTED IN ACCORDANCE WITH THE LATEST APPROVED EDITION OF THE PHILIPPINE ELECTRICAL CODE AND REGULATIONS OF THE LOCAL AND NATIONAL AUTHORITIES CONCERNED IN THE ENFORCEMENT OF ELECTRICAL LAW AND ORDINANCES






ALL ELECTRICAL INSTALLATIONS HEREIN SHALL BE DONE UNDER THE SUPERVISION OF A DULY LICENSED ELECTRICAL PRACTITIONER

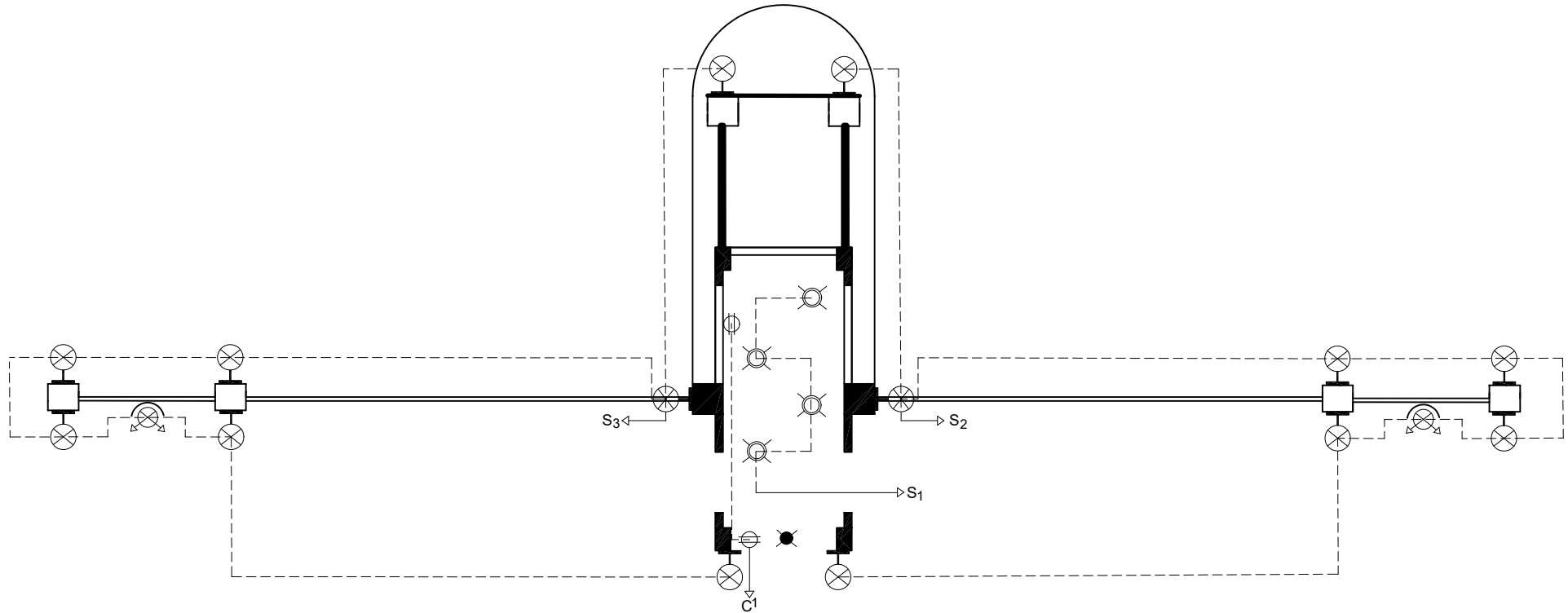
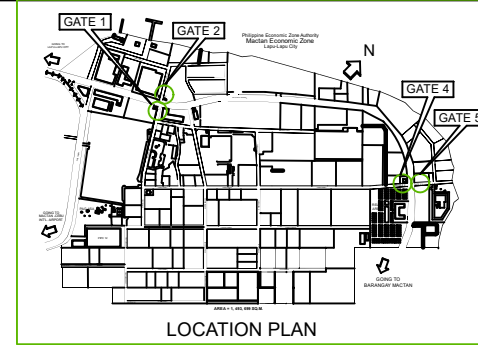
ALL MATERIALS TO BE USED SHALL BE NEW AND APPROVED TYPE TO ANY PURPOSE INTENDED.

NO BRANCH CIRCUIT SHALL BE HAVE A LOAD OF MORE THAN 80% OF ITS RATING

ELECTRICAL REQUIREMENTS SHALL BE 220 VOLTS, 1-PHASE, 60HZ, SUPPLY

LEGEND

-  1 - 12 watts Pin Light
-  2- 5 watts Wall Light
-  Emergency Light
-  1 - 200w Flood Light
-  Convenience Outlet
- S1 One - Gang Switch
- S2 Two - Gang Switch
- S3 Three - Gang Switch
- Switch and Circuit Line
- > Switch and Circuit Run



ELECTRICAL LAY-OUT

FROM THE OFFICE OF :	PROJECT TITLE:	PREPARED BY:	CHECKED AND VERIFIED:	RECOMMENDING APPROVAL:	APPROVED BY:	SHEET NO.
PHILIPPINE ECONOMIC ZONE AUTHORITY	PROPOSED ELECTRICAL PLAN FOR GATE 1,2,4 & 5	JESSALYN D. FLORES PDO I / ELECTRICAL ENGINEER	LOUIE EVANS E. ESOTO DIVISION CHIEF II, EMD	ARNEL M. SUYU ZM/OIC-DM, OPERATIONS	MR. EMMANUEL D. CORTERO ZONE ADMINISTRATOR, MEZ	E 1/1

SCOPES OF WORK:

GATE 1:

1. REMOVAL OF DOOR JAMBS
2. REPAINTING OF WALLING AND CEILING
3. REPLACEMENT OF CERAMIC FLOOR TILES
4. MINOR CORRECTION AND VARNISH APPLICATION OF WALL BRICKS
5. REMOVAL AND REPLACEMENT OF FIXED GLASS WINDOW
6. CONSTRUCTION OF NEW TRELLIS (SEE DETAILS)
7. RE-INSTALLATION OF GATE
8. INSTALLATION OF OPEN SHELVES
9. MINOR REPAIR, MODIFICATION AND RE-PAINTING OF GATE
10. INSTALLATION OF ID/GATE PASS HOLDER
11. ELECTRICAL WORKS

GATE 2:

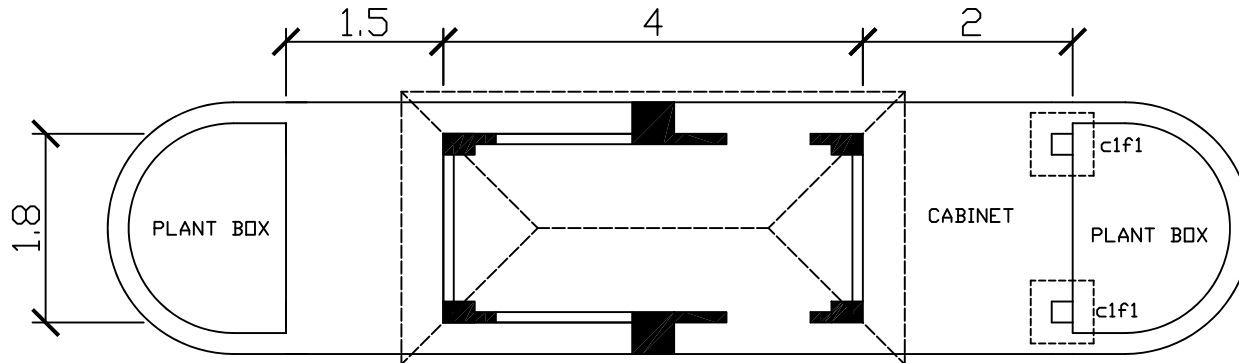
1. REMOVAL OF DOOR JAMBS
2. MINOR REPAIR OF CEILING
3. REPAINTING OF WALLING AND CEILING
4. REPLACEMENT OF CERAMIC FLOOR TILES
5. MINOR CORRECTION AND VARNISH APPLICATION OF WALL BRICKS
6. REMOVAL AND REPLACEMENT OF FIXED GLASS WINDOW
7. INSTALLATION OF OPEN SHELVES
8. CONSTRUCTION OF NEW TRELLIS (SEE DETAILS)
9. MINOR REPAIR, MODIFICATION AND RE-PAINTING OF GATE
10. INSTALLATION OF ID/GATE PASS HOLDER
11. ELECTRICAL WORKS

GATE 4:

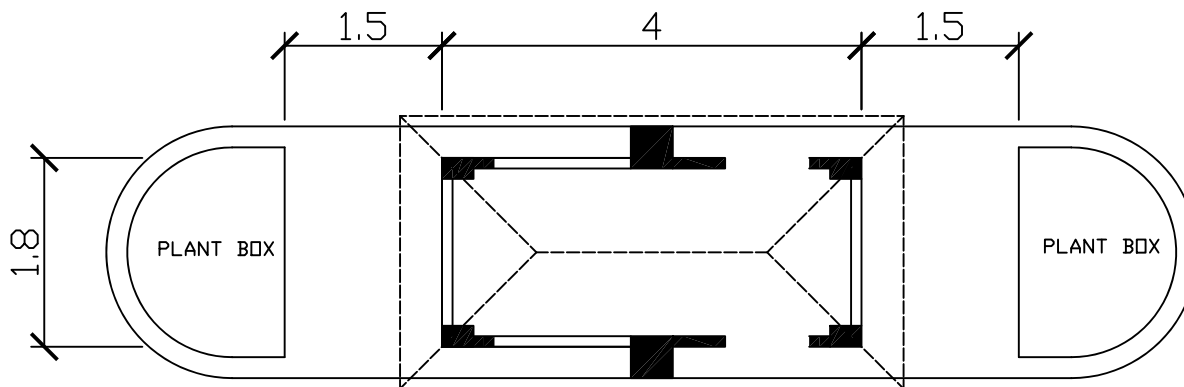
1. REMOVAL OF DOOR JAMBS
2. REPAINTING OF WALLING AND CEILING
3. REPLACEMENT OF CERAMIC FLOOR TILES
4. MINOR CORRECTION AND APPLICATION OF VARNISH
5. REMOVAL AND REPLACEMENT OF FIXED GLASS WINDOW
6. CONSTRUCTION OF NEW TRELLIS (SEE DETAILS)
7. INSTALLATION OF OPEN SHELVES
8. MINOR REPAIR, MODIFICATION AND RE-PAINTING OF GATE
9. INSTALLATION OF ID/GATE PASS HOLDER
10. ELECTRICAL WORKS

GATE 5:

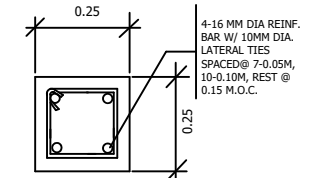
1. REMOVAL OF DOOR JAMBS
2. MINOR REPAIR OF CEILING
3. REPAINTING OF WALLING AND CEILING
4. REPLACEMENT OF CERAMIC FLOOR TILES
5. MINOR CORRECTION AND VARNISH APPLICATION OF WALL BRICKS
6. REMOVAL AND REPLACEMENT OF FIXED GLASS WINDOW
7. INSTALLATION OF OPEN SHELVES
8. CONSTRUCTION OF NEW TRELLIS (SEE DETAILS)
9. MINOR REPAIR AND RE-PAINTING OF GATE
10. INSTALLATION OF ID/GATE PASS HOLDER
11. ELECTRICAL WORKS



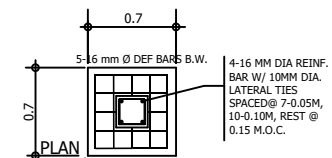
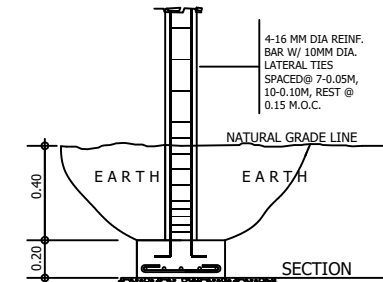
PROPOSED FLOOR PLAN



EXISTING FLOOR PLAN

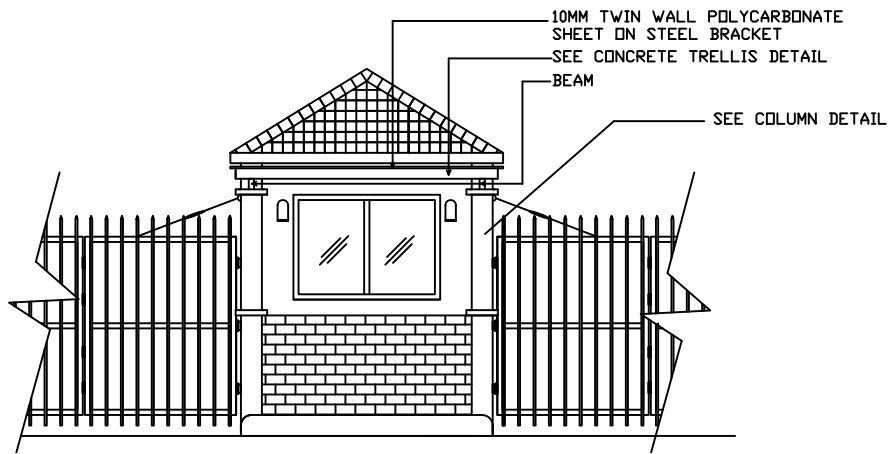


c1f1 DETAILS
SCALE 1:10 METERS



c1f1 DETAIL
SCALE 1:25 METERS

FROM THE OFFICE OF :	PROJECT TITLE:	PREPARED BY:	CHECKED AND VERIFIED:	RECOMMENDING APPROVAL:	APPROVED BY:	SHEET NO.
PHILIPPINE ECONOMIC ZONE AUTHORITY	PROPOSED IMPROVEMENT OF MEZ SECONDARY GATES	MARIA DINALYNN Z. FLORES ESO II/ARCHITECT	LOUIE EVANS E. ESOTO DIVISION CHIEF II, EMD	ARNEL M. SUYU ZM/OIC-DM, OPERATIONS	MR. EMMANUEL D. CORTERO ZONE ADMINISTRATOR, MEZ	A 1



FRONT ELEVATION



PERSPECTIVE

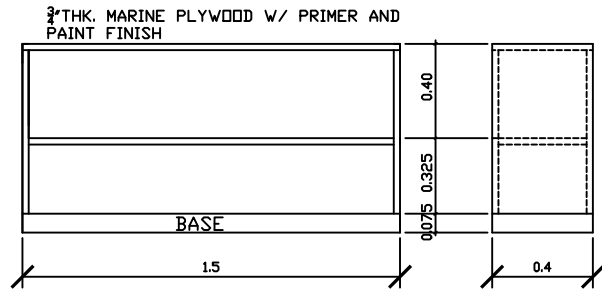


LEFT SIDE ELEVATION

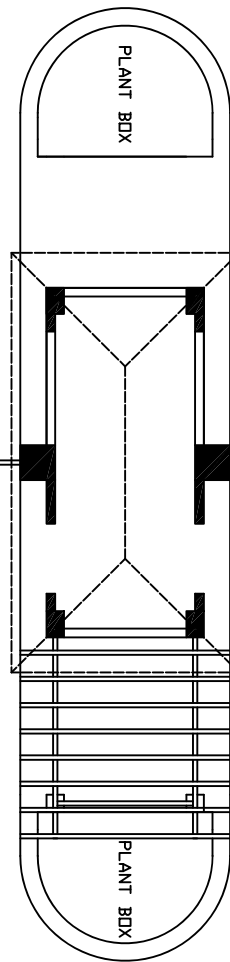


REAR ELEVATION

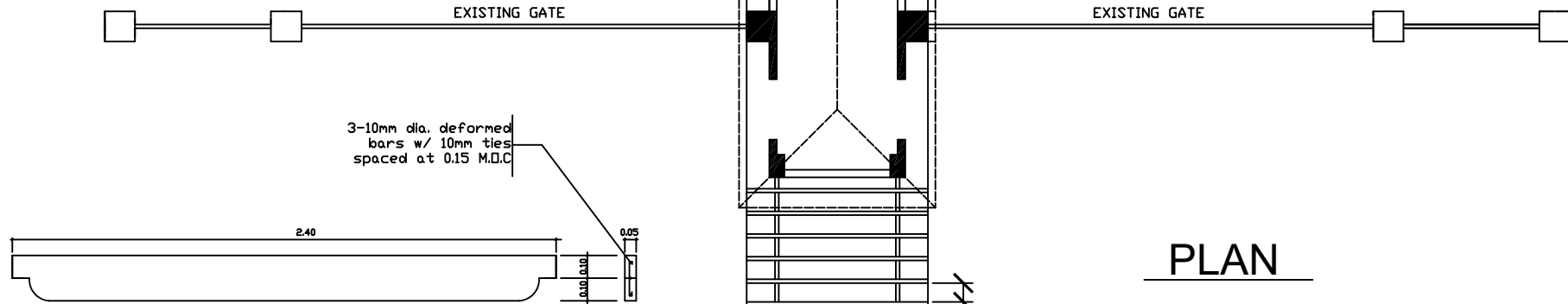
FROM THE OFFICE OF :	PROJECT TITLE:	PREPARED BY:	CHECKED AND VERIFIED:	RECOMMENDING APPROVAL:	APPROVED BY:	SHEET NO.
PHILIPPINE ECONOMIC ZONE AUTHORITY	PROPOSED IMPROVEMENT OF MEZ SECONDARY GATES	MARIA DINALYNN Z. FLORES ESO II/ARCHITECT	LOUIE EVANS E. ESOTO DIVISION CHIEF II, EMD	ARNEL M. SUYU ZM/OIC-DM, OPERATIONS	MR. EMMANUEL D. CORTERO ZONE ADMINISTRATOR, MEZ	<div style="border: 1px solid black; border-radius: 50%; width: 40px; height: 40px; margin: 0 auto; display: flex; flex-direction: column; align-items: center; justify-content: center;"> A 2 </div>



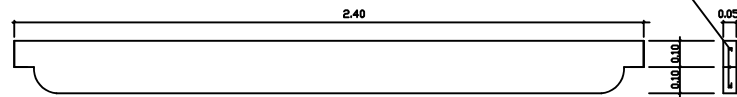
OPEN SHELVES DETAIL



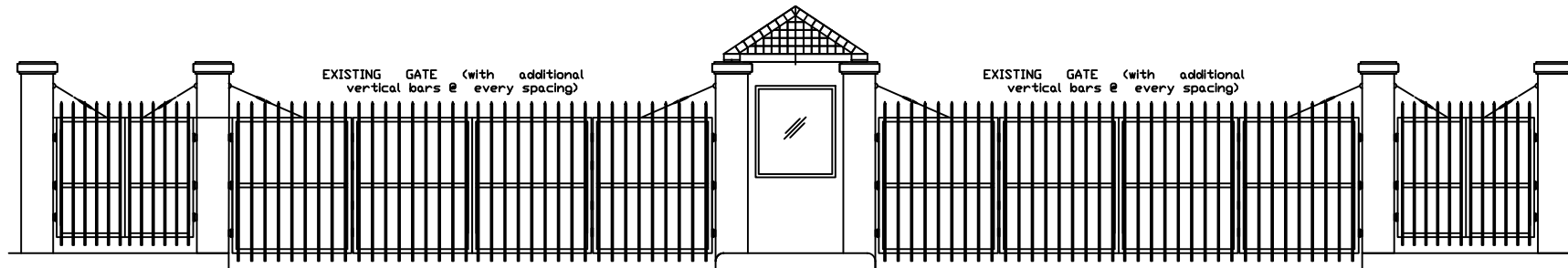
PLAN



3-10mm dia. deformed bars w/ 10mm ties spaced at 0.15 M.O.C



CONCRETE TRELLIS DETAIL



REAR ELEVATION

FROM THE OFFICE OF :	PROJECT TITLE:	PREPARED BY:	CHECKED AND VERIFIED:	RECOMMENDING APPROVAL:	APPROVED BY:	SHEET NO.
PHILIPPINE ECONOMIC ZONE AUTHORITY	PROPOSED IMPROVEMENT OF MEZ SECONDARY GATES	MARIA DINALYNN Z. FLORES ESO II/ARCHITECT	LOUIE EVANS E. ESOTO DIVISION CHIEF II, EMD	ARNEL M. SUYU ZM/OIC-DM, OPERATIONS	MR. EMMANUEL D. CORTERO ZONE ADMINISTRATOR, MEZ	A 3