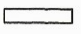




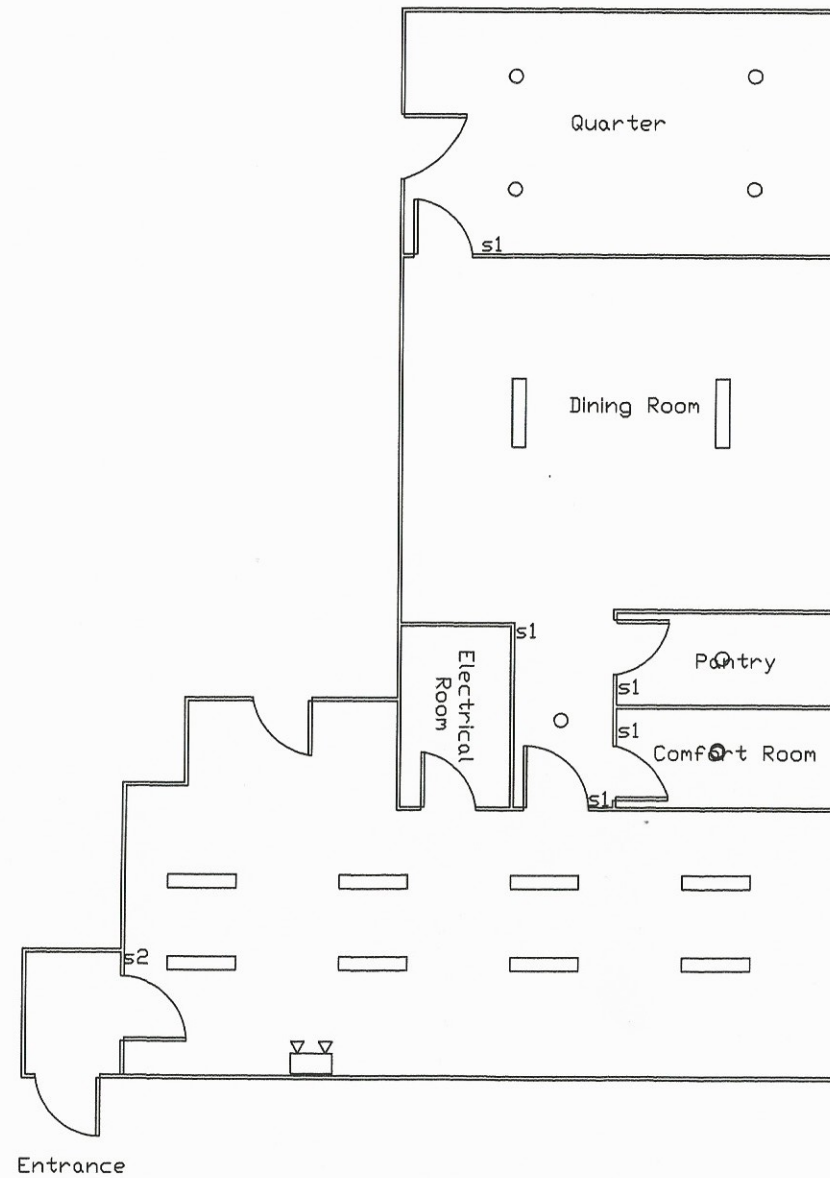


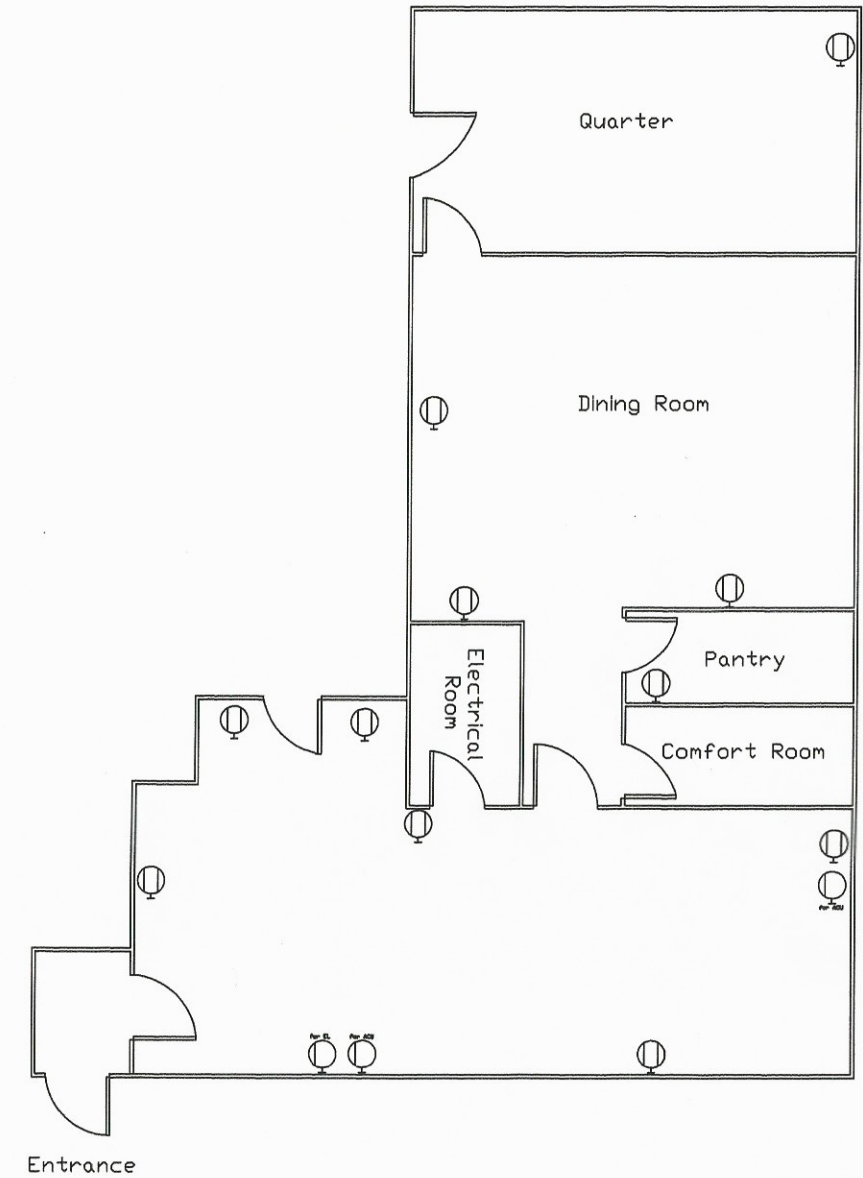
PEZA-PTC ADMIN OFFICE

LEGENDS:

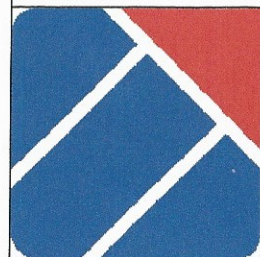
-  - 1-40W FLUORESCENT BULBS
-  - LED PIN LIGHTS
-  - WALL MOUNTED EMERGENCY LIGHTS
-  - DUPLEX CONVENIENCE OUTLET
-  - SPECIAL PURPOSE OUTLET (ACU)
- s1 - 1 GANG SWITCH
- s2 - 2 GANG SWITCH



LIGHTING LAYOUT



POWER LAYOUT



PEZA-BOC ADMIN OFFICE

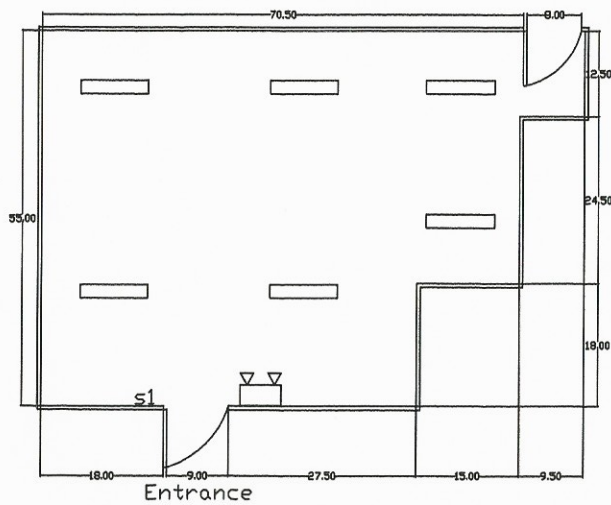
PROPOSED ELECTRICAL LAYOUT

Prepared by

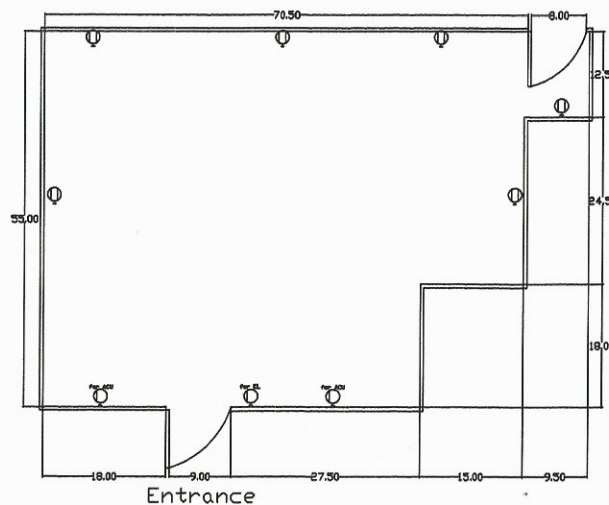
ENGR. MARK ANTHONY A. SANTOS

E-1/2

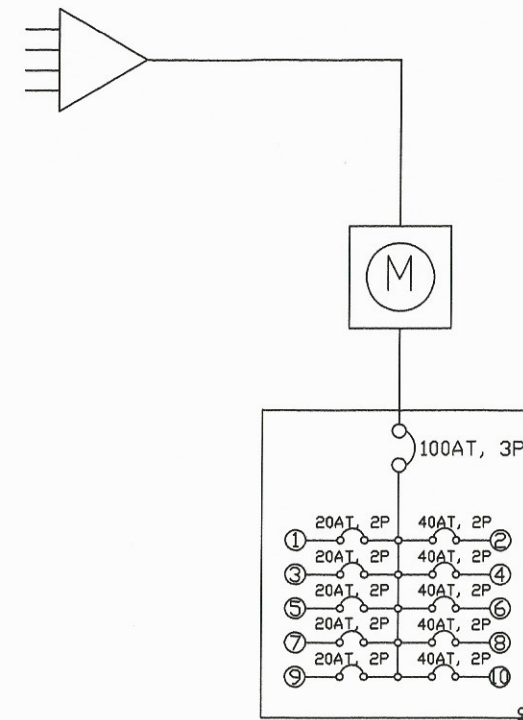
BOC-PTC ADMIN OFFICE



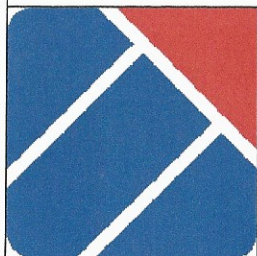
LIGHTING LAYOUT



POWER LAYOUT



CKT. NO.	DESCRIPTION	LOAD (KVA)	AMPS PER PHASE			Circuit Breaker		WIRE (mm ²)		
			A	B	C	AF	AT	PHASE	GROUND	TYPE
1	6 Lighting Layout (BOC)	0.6	2.61			100	20	2.0	2.0	THHN
2	2TR ACU (BOC)	7.017		30.51		100	40	5.5	5.5	THHN
3	13 Convenience Outlet (BOC)	2.34			10.17	100	20	2.0	2.0	THHN
4	2TR ACU (BOC)	7.017	30.51			100	40	5.5	5.5	THHN
5	11 Convenience Outlet (PEZA)	1.98		8.6		100	20	2.0	2.0	THHN
6	2TR ACU (PEZA)	7.017			30.51	100	40	5.5	5.5	THHN
7	17 Lighting Layout (PEZA)	1.7	7.39			100	20	2.0	2.0	THHN
8	2TR ACU (PEZA)	7.017		30.51		100	40	5.5	5.5	THHN
9	11 Convenience Outlet (PEZA)	1.98			8.6	100	20	2.0	2.0	THHN
10	2TR ACU (PEZA) - SPARE	7.017	30.51			100	40	5.5	5.5	THHN
			71.02	69.62	49.28					



PEZA-BOC ADMIN OFFICE

PROPOSED ELECTRICAL LAYOUT

Prepared by

ENGR. MARK ANTHONY A. SANTOS